

# Inspection class ROV “VALOR”



## GENERAL

Manufacturer:	Seatrronics
Built	2020
Length	860 mm
Width	600 mm
Height	550 mm
Weight in air	~ 80 kg
Depth rating	300 m

## THRUSTERS

Number of horizontal thrusters	4 thrusters vectored at 45°
Number of vertical thrusters	2 thrusters vectored at 30°
Type of thrusters	RS485 controlled brushless DC thrusters, type SPE75
Thrust forward/backward/lateral	71 kgf
Thrust vertical	43 kgf
Max. working current speed	2.5 kn

## POWER SUPPLY

System input voltage	3 Phase 415 V AC (operating range 373 – 456 V AC)
System input current	20 A (base system)
Power delivered to ROV	800 V DC, 10 kW base system
Power deliverable to payload	software configured 12 V to 48 V @ max 3A per user port

## CONTROL UNIT

Weight control unit	~ 80 kg
Display	1 x 17.3" rackmount HD monitor, 1 x rackmount HD touchscreen monitor
Input device	topside controller c/w hand controller
Pilot aids	very pilot friendly system, auto heading, auto depth, auto altitude, auto hover with pilot notch function, auto movement to point of interest, auto gridline survey
Total power:	1940 kW (2600 bhp) at 1800rpm
Main engines:	2 x Caterpillar C32 acert C rating
Bow thruster:	280 kW C-systems 1000

## TETHER AND DATA CAPACITY

Tether length	150 m loose and 350 on electric winch
Diameter	16.5 mm
Tether capabilities	6 x power conductors, 4 x SM fiber, 1 x shielded twisted pair
Data capacity	up to 10 GBits/s at 1 Gb/s per user port

## LIGHT AND CAMERA

Number of lights	6
Type of lights	teledyne 1500-B-LED, 1500 lumen dimmable LED
Type and number of cameras	2 x GigE cameras supplied (1 x monochrome, 1 x colored), option for additional 2 x 3G HD-SDI or 10 x GigE vision / IP cameras

## EQUIPMENT

Sonar	Gimini 720ik
Gyro c/w INS	Advanced Navigation MEMS gyro c/w Sublocus INS
DVL	Nortek 1MHz DVL
USBL	Sonardyne Mini Ranger USBL system incl. 2 x beacons and 2 x nano beacons
Launch and recovery	Lock-latch system
Tooling skid	fitted at standard

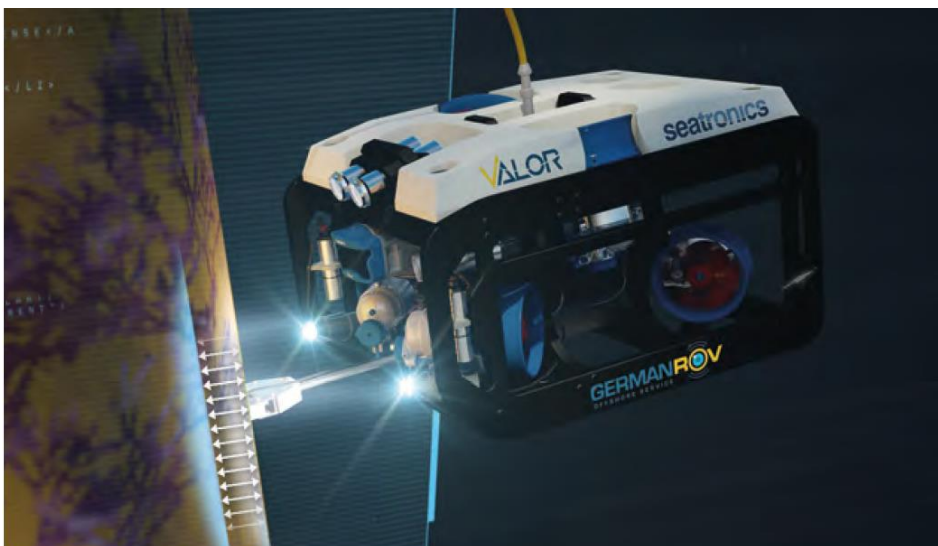
## ADDITIONAL TOOLING

Max payload	~ 21 kg
Through frame lift	100 kg
Expansion ports	10 x User connectors each supporting: – variable 12V DC- 48V DC software configured power output – gigabit ethernet – RS232/422/RS485 (software selectable) time stamped data by 1 PPS – TTL sync in, TTL sync out – analog in ± 10V 16-bits, analog out ± 10V 12-bits
Manipulator	IOS 5 function Orion manipulator

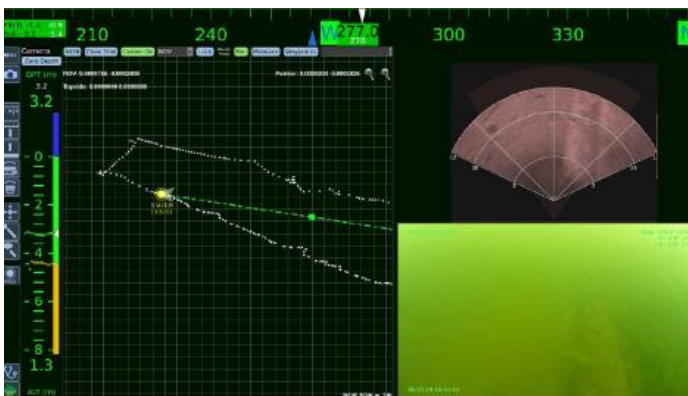
# Inspection class ROV "VALOR"



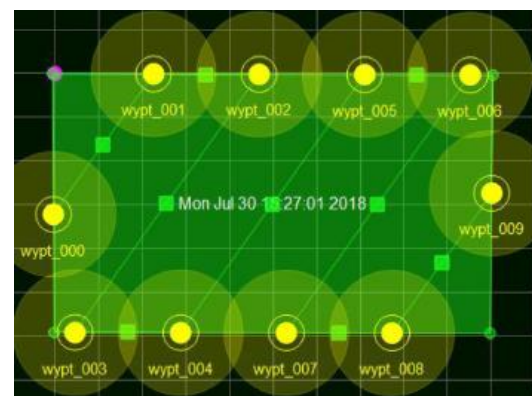
MANIPULATOR



VALOR WITHOUT TOOLING SKID



PILOT SCREEN SHOWING POSITION, SONAR AND CAMERA



PLANNING AN AUTO GRIDLINE SURVEY